

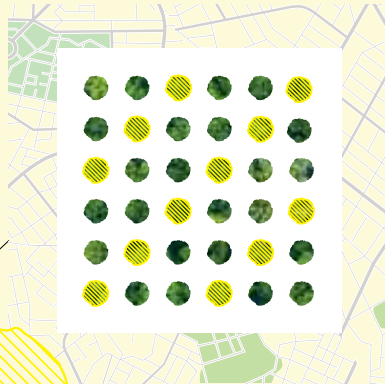
# How many trees do our cities need?

## THE PROBLEM

In U.S. urban areas, we are

**losing one tree for every two trees established.**

*(established means planted or naturally regenerated)*



The loss is mainly to due to:

- Natural disasters, such as hurricanes, tornadoes, fires, insects and diseases
- Difficulty of growing trees in urban areas
- Tree removal for development
- Improper planting practices

Tree loss is a problem, given the role trees play in advancing Tree Equity and slowing climate change.

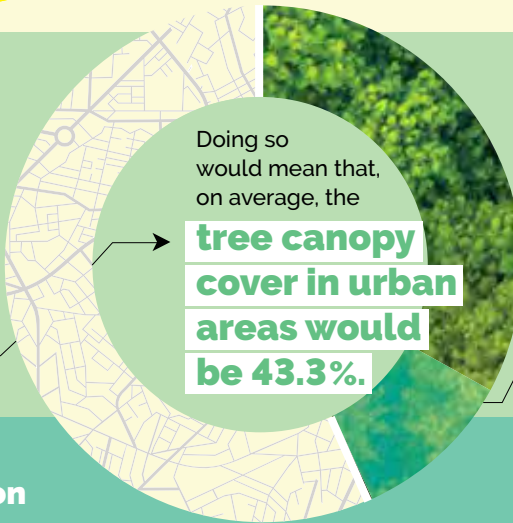
And it's not a problem that's going away.

The projected loss of tree canopy in urban areas is

**8.3%** by 2060.

## THE SOLUTION

Annually plant **31.4 million** trees in the U.S., which will cost \$8.9 billion.



That's a **10%** relative increase over current tree canopy cover.

## THE BENEFITS

of planting 31.4 million trees annually



**Tree Equity**

We will advance Tree Equity by planting these trees where they are needed most.



**Jobs**

At least 228,000 jobs would be created or supported every year.



**Climate Change**

Nearly 1 billion metric tons of carbon would be stored in the trees.



**Health**

Nearly \$1.6 billion a year would be saved from things like avoided asthma-related emergency room visits.